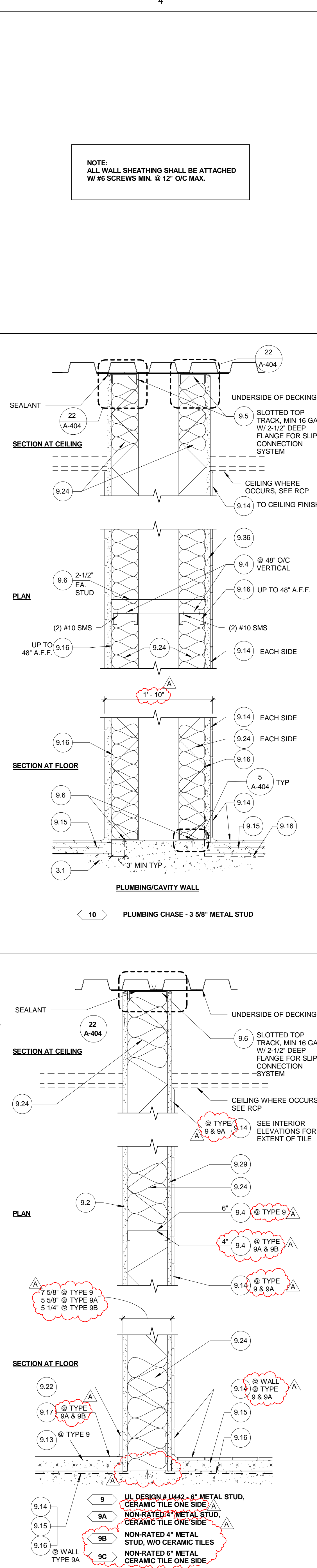
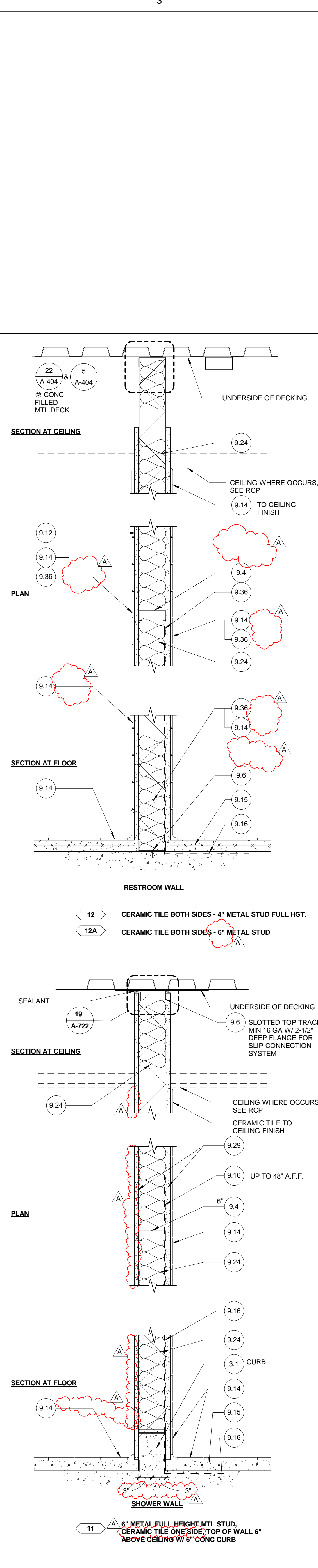


NOTE:
ALL WALL SHEATHING SHALL BE ATTACHED
W/ #6 SCREWS MIN. @ 12" O/C MAX.



MATERIAL KEYNOTES

DIVISION 03 CONCRETE

3.1 CAST IN PLACE CONCRETE

3.2 10 MILL VAPOR RETARDANT

3.3 6" CONCRETE HOUSEKEEPING PAD

3.4 GRADE BEAM

3.5 CONCRETE STOP

DIVISION 04 MASONRY

4.1 NOT USED, 7D

4.2 CMU SPLIT FACE

DIVISION 05 METALS

5.1 STEEL BEAM

5.2 STEEL COLUMN

5.3 EXPOSED STEEL COLUMN

5.4 EXPOSED STEEL BRACE

5.5 METAL DECK

5.6 STEEL CHANNEL

5.7 STEEL ANGLE (SST-WHERE NOTED)

5.8 STEEL PLATE-GALV (SST-WHERE NOTED)

5.9 STEEL PIPE (SST WHERE NOTED)

5.10 TUBULAR STEEL

5.11 STEEL BRACING

5.12 STEEL BENT PLATE (SST WHERE NOTED)

5.13 STEEL RIBBED NAILED (SST-WHERE NOTED)

5.14 METAL GRATING GALVANIZED

5.15 METAL ROOF DECK CEILING SYSTEM (EPOCURE 3.5)

5.16 ANCHOR BOLT W/ EXPANSION SHIELD

5.17 OPEN WEB JOIST

5.18 EXPANSION JOINT COVER

5.19 EXT. COL. FORMED METAL FRAMING, SEE STRUCT.

5.20 SAFETY & TIE BACK ANCHOR

5.21 BASIS OF DESIGN MODEL = PB75-B BY PRO-BEL

DIVISION 06 WOOD, PLASTIC AND COMPOSITES

6.1 WOOD BLOCK-NAILED PERSURE TREATED

6.1B WOOD BLOCK-NAILED FR TREATED

6.2 PLYWOOD 3/4", FR TREATED

6.3 PLASTIC LAMINATE

6.4 WOOD CABINETS

6.5 MEDIUM DENSITY FIBERBOARD

6.6 SOLID SURFACING-MATERIAL COUNTERTOP

6.7 5/8" GLASS-MAT FACED GYP SHEATHING (061600)

6.8 1/2" ORIENTED STRAND BOARD (OSB)

ROOF SHEATHING (061600)

DIVISION 07 THERMAL & MOISTURE PROTECTION

7.1 CONCRETE ROOF TILES

7.2 STAINLESS STEEL FLASHING / COUNTERFLASHING

7.3 NOT USED

7.4 POLYVINYL-CHLORIDE (PVC) ROOFING (075419)

7.5 MEMBRANE EGCE FASTENER @12" OC

7.6 SAND COATED ROOF WALKWAY (075419)

7.7 RIGID FOAM INSULATION OF AGED R-30

OR 5.12" MIN. (UCN) (075419)

7.8 RIGID ROOF INSUL. TAPERED R-30 or 5.5" MIN (075419)

7.9 NOT USED

7.10 FIRE STOPPING SYSTEM

7.11 1/2" GLASS MAT FACED PROTECTION BOARD

7.12 BATT INSULATION R-19 (UCN)

7.13 INSECT SCREEN

7.14 PVC MEMBRANE FLASHING

7.15 PVC W/PARAPROUND PIPE SEAL

7.16 5/8" GLASS MAT FACED THERMAL BARRIER

7.17 CRICKET

7.18 EXTRUSION ALUMINUM TRIM

7.19 ALUMINUM FLASHING

7.20 FORMED SHEET S.S. COPING

7.21 NOT USED, 7D

7.22 DRAINAGE GEOMPOSITE (071416)

7.23 BELOW GRADE WATERPROOFING (071416)

SST CLAMPING RING

7.24 PREFABRICATED ROOF CURB-INSULATED

7.26 SEALANT WITH BACKER ROD

7.27 SEALANT (FR & ACST WHERE NOTED)

7.28 NEOPRENE WASHER OR PAD

7.29 3/32" FELT

7.30 FIRE TRACK SHADOWLINE

7.31 FIRE SAFING INSULATION

7.32 EPDM GASKET

7.33 20 GA GALVANIZED SPOON PANEL (076200)

7.34 DOWN SPOUT (076200)

20 GA GALV. GUTTER (076200)

7.35 PERFORATED SHEET ALUMINUM (ALP-1)

7.37 GALVANIZED METAL FLASHING (076200)

7.38 THERMOPLASTIC WATERPROOFING SYSTEM (071354)

7.39 NOT USED

7.40 5/8" GLASS-MAT FACED WATER RESISTANT

GYP SUBSTRATE BOARD

7.41 MECHANICALLY FASTENED FIBERGLASS

INSULATION BOARD R-13

7.42 SPRAY-ON CEMENTITIOUS FIREPROOFING

7.43 SEALANT TAPE

7.44 PVC CLADDED OVERFLOW SCUPPER BY ROOF MFR

DIVISION 08 OPENINGS

8.1 DOOR

8.2 FRAME PER SCHEDULE TYPE

8.3 FRAME ANCHOR

8.4 OVERHEAD COILING DOORS

8.5 ACCESS DOOR-WALL

8.6 ACCESS DOOR CEILING

8.7 SOUND RETARDANT DOOR-STD-55

8.8 GROUT FILL

8.9 AUTOMATIC DOOR BOTTOM

8.10 WEATHER-STRIPPING

8.11 THRESHOLD

8.12 HM GLASS STOP

8.13 POWER ASSIST DOOR - WALL PLATE

8.14 ALUM. STOREFRONT GLAZING SYSTEM

8.15 ALUM. STOREFRONT ENTRANCE DOOR

8.16 GLAZED ALUMINUM CURTAIN WALL

8.17 INTERIOR ALUMINUM FRAMING SYSTEM

8.18 1" INSULATING GLAZING

8.19 FRITTED GLAZING

8.20 SPANDREL GLAZING

8.21 1/4" THICK VISION GLASS (SAFETY WHERE NOTED)

8.22 CLERESTORY WINDOW

8.23 SHM

8.24 KNOX BOX

8.25 SS WALK-OFF GRILLE

8.26 EXTRUDED ALUMINUM LOUVER (UNO)

8.27 INSULATED BLANK-OFF PANELS

8.28 EXTRUDED ALUM TRIM TO MATCH ALUM FRAME

8.29 NOT USED

8.30 SOLAR TUBE- TUBULAR DAYLIGHTING

DIVISION 09 FINISHES

9.1 1/2" GWB TYPE "X"

9.2 5/8" GWB TYPE "X"

9.3 1" GWB SHAFT LINER

9.4 20 GA MET STD @ 16"/O/C (UCN), SEE SHEET A-404

9.5 SLOTTED TOP TRUCK

9.6 METAL STUD FURRING

9.7 COLD FORMED FURRING CHANNEL

9.8 METAL TRIM GALVANIZED

9.9 FRAMING ANGLE, MIN 20 GA GALV

9.10 6"x10 MIL FLUSH MOUNT BACKING FOR MTL STUDS

9.11 SHAFT WALL STUDS MIN 20 GA @ 24" OC (UNO)

9.12 SHAFT J RUNNER

9.13 TERRAZZO FLOORING

9.14 CERAMIC TILE

DIVISION 09 FINISHES (CONTINUED)

9.15 REINFORCED MORTAR SETTING BED

9.16 WATERPROOFING MEMBRANE

9.17 SCHEDULED FLOORING

9.18 SUSPENDED ACOUSTICAL PANEL

9.19 CLG SYSTEM, 2"x2" (ACT-2)

SUSPENDED ACOUSTICAL LINEAR PLANK

CLG SYSTEM (ACT-1)

9.20 SUSPENDED GYP BOARD SOFFIT SYSTEM

9.21 1" ACOUSTICAL BLACK FACED INSULATION BLANKET

9.22 SCHEDULED WALL BASE

9.23 PAINT

9.24 ACOUS INSULATION, 3-INCH (UCN)

9.25 TYPE "S" SCREWS @ 12" O/C (UCN)

9.26 WIRE HANGER 12 GA MIN (UCN), SEE SHEET A-740

9.27 16 GA FRAMING CLIP

9.28 METAL Z-CLIP

9.29 5/8" CEMENTITIOUS TILE BACKER BOARD

9.30 REVEAL

9.31 EXTRUDED ALUMINUM "J" MOLDING

"TRY REGLET" NO. 2054 OR EQUAL

9.32 GYPSUM BOARD CONTROL JOINT

9.33 3-COAT CEMENT PLASTER SYSTEM (092400)

9.34 ACCESS FLOORING (096900)

9.35 FURRING CHANNEL MIN. 20 GA. SIZE AS NOTED

9.36 5/8" GLASS MAT FACED TILE BACKER BOARD

9.37 SOUND ATTENUATION BLANKET

9.38 TERRAZZO STAIR TREADS

9.39 ACOUSTICAL WALL PANELS (098413)

DIVISION 10 SPECIALTIES

10.1 MARKER BOARD, SIZE AS NOTED

10.2 TACK BOARD

10.3 TOILET PARTITION

10.4 NOT USED

10.5 FIXED SUNSCREENS (107113)

10.6 BUILDING DIRECTORY

10.7 METAL LOCKER

10.8 FIRE EXTINGUISHER CABINET (FEF)

10.9 FIRE EXTINGUISHER (FE)

10.10 METAL STORAGE SHELVING

10.11 NOT USED

10.12 CORNER GUARD

10.13 CRASH GUARD

10.14 NOT USED

10.15 DOOR STOP (FLOOR MOUNTED)

DIVISION 11 EQUIPMENT

11.1 REFRIGERATOR

11.2 RANGE/STOVE TOP

11.3 MICROVAVE OVEN

11.4 DISHWASHER

11.5 VENDING MACHINE (N.I.C.)

11.6 MOTORIZED PROJECTION SCREEN

11.7 VIDEO WALL SYSTEM (GFEI)

11.8 PROJECTOR (N.I.C.)

11.9 WALL MOUNTED PLASMA TV (N.I.C.)

11.10 CONTROL UNIT

11.11 POWER UNIT

11.12 CONDUIT

11.13 PAPER TOWEL HOLDER

DIVISION 12 FURNISHINGS

12.1 MANUAL SUNSHADE (122413)

12.2 MOTORIZED BLACKOUT SHADE (122413)

12.3 MANUAL SUNBLACKOUT SHADE COMBO (122413)

12.4 MOTORIZED SUNBLACKOUT SHADE COMBO (122413)

12.5 SYSTEM FURNITURE (GFEI)

12.6 CONTROL CONSOLES (GFEI)

12.7 ENTRANCE FLOOR GRILLE (124816)

12.8 HORIZONTAL LOUVER BLINDS (122113)

DIVISION 14 EQUIPMENT

14.1 HYDRAULIC ELEVATORS (142400)

DIVISION 22 PLUMBING

22.1 ROOF DRAIN

22.2 OVERFLOW DRAIN

22.3 VENT THRU ROOF

22.4 ELECTRIC WATER COOLER

22.5 KITCHEN SINK

22.6 SERVICE SINK

22.7 WATER CLOSET

22.8 LAVATORY

22.9 URINAL

22.10 FLOOR DRAIN

22.11 AREA DRAIN

22.12 FLOOR SINK

22.13 SUMP

22.14 PORTABLE EYE WASH STATION (224500)

22.15 WATER HYDRANT

22.16 RAIN GUTTER DRAIN PIPING

22.17 VACUUM EXHAUST

22.18 ROOF RECEPTOR

22.19 FLOOR CLEANOUT

DIVISION 23 HVAC

23.1 BOILER FLUE

23.2 LINEAR DIFFUSER

23.3 EXHAUST FAN

23.4 DUCT

23.5 DIFFUSER

23.6 UNIT HEATER

23.7 INTAKE VENTILATOR

23.8 EGE EXHAUST PIPE

23.9 CRAC UNIT

23.10 FIRE DAMPER

23.11 RETURN AIR TRANSFER GRILLE

DIVISION 26 ELECTRICAL

26.1 LIGHT FIXTURE

26.2 CARD READER

26.3 CABLE TRAY

26.4 EQUIPMENT RACKS

26.5 EMERG. ENGINE GENERATOR (GFO)

26.6 CONDUITS

26.7 DUCT BANK

26.8 RADIO RACKS (GFEI)

26.9 ANTENNA CONDUIT

26.10 LIGHTNING PROTECTION

26.11 PANEL - SEE SCHEDULE

DIVISION 31/32 EXTERIOR IMPROVEMENTS

31.1 SAND

31.2 CRUSHED STONE

31.3 COMPACTED SOIL

31.4 PERIMETER DRAIN

31.5 ASPHALT PAVING

31.6 CONCRETE PAVING

31.7 EXPANSION JOINT

31.8 COMPRESSIBLE FILLER

31.9 CONTROL JOINT

31.10 ORNAMENTAL MTL FENCES-GATES

31.11 UNIT PAVERS

DIVISION 32 SYNTHETIC RESILIENT SURFACES

32.1 CHAIN-LINK FENCES AND GATES

32.2 SYNTHETIC RESILIENT SURFACES

NOTE: 1. NUMBERS IN PARENTHESIS (-) INDICATE REFERENCED SPECIFICATION SECTION
2. FOR LIGHT GAGE METAL FRAMING AND ANCHORING DETAILS SEE SHEET A-404